

17 March 2025

Our ref: 1683/JW/am

To whom it may concern

Dear Sir or Madam:

NOTIFICATION REGARDING OPPORTUNITY TO PARTICIPATE IN THE ENVIRONMENTAL AUTHORISATION APPLICATION PROCESS FOR THE PROPOSED GENADE BOERDERY MIDDELPLAATS PIVOT IN THE SOL PLAATJE LOCAL MUNICIPALITY, NORTHERN CAPE PROVINCE, SOUTH AFRICA.

Genade Boerdery (Pty) Ltd (hereafter referred to as the applicant) has appointed Environmental Impact Management Services (Pty) Ltd (EIMS) as the Independent Environmental Assessment Practitioner (EAP) to assist with undertaking the required authorisation processes (including the statutory public participation), and to compile and submit the required documentation in support of application for:

- An Environmental Authorisation (EA) in accordance with the National Environmental Management Act (Act 107 of 1998) (NEMA), Environmental Impact Assessment (EIA) Regulations, 2014 as amended for the following listed activity:
 - GNR 984 (2014, as amended): Activity 15 (clearance of more than 20 hectares of indigenous vegetation).

Additional listed activities and/or water uses may be identified during the process.

The applicant wishes to create 8 new cultivation (pivot) areas for the cultivation of potatoes. The development of these pivots will occur in phases over the course of 5 years and the crops will be rotated to prevent blight and allow for conservation of the soil. Once the planting cycle for a pivot area is completed, the area will be reseeded with grazing grasses for cattle. Seven of the new cultivation areas will each cover 60 hectares and one will cover 50 hectares, resulting in a total area of ~470 hectares of indigenous vegetation clearance by the end of the five-year period.

Irrigation requirements will be met using the applicant's existing Lawful Water Use, which authorises the taking of water from the Vaal River system for irrigation of up to 60 hectares. No additional water resources will be required as only one crop area will be planted at a time.

The proposed project is located on the farm Middel Plaats South No. 104, Sol Plaatje Local Municipality, Northern Cape Province. The site is ~8km south of Schmidtsdriif. The centre point of the site is -28.785582°S, 24.074790°E. Please refer to attached project locality map.

EIMS will be following the procedures defined in the Environmental Impact Assessment (EIA) Regulations (GRN982 of 2014, as amended) for undertaking a Scoping and EIA process. In accordance with Chapter 6 of the EIA Regulations, a public participation process will be undertaken. You are hereby invited to register and comment on the proposed project and application/s. In order to ensure that you are identified and registered as an Interested and Affected Party (I&AP) and that your comments are captured, please submit your name, contact details, the reason for your interest in writing or telephonically, to EIMS. Please note that only registered I&AP's will be informed of future project information and opportunities for participation.

By registering as an I&AP, you consent to the collection and processing of your personal information as per the EIMS Privacy Notice available at www.eims.co.za/public-participation. In order to avoid missing out on opportunities for public participation please submit I&AP registrations, or any queries, comments, or concerns with regards to this application, as soon as possible to EIMS at:

8 Dalmeny Road, Pine Park, 2194 | PO Box 2083, Pinegowrie 2123, South Africa
T (011) 789-7170 | F (086) 571- 9047

W www.eims.co.za | E mail@eims.co.za | Co Reg 1992/005927/07 | VAT 489 013 9027

Directors: L Whitlow, A Smith.

Contact Person: Alex Msipa

EIMS Reference Number: 1683

Postal Address: P.O. Box 2083; Pinegowrie; 2123

Telephone: (011) 789 7170/ Fax: (086) 571 9047

E-mail: middelplaats@eims.co.za

Please include the project reference number **1683** in all correspondence.

Further information will be available at www.eims.co.za/public-participation/. Please note that in the event that you are unable to access the website due to data constraints please contact EIMS for alternative arrangements.

Please feel free to contact the undersigned if you have any queries or concerns.

Kind Regards,

Alex Msipa

17 Maart 2025

Ons verwysing: 1683/JW/am

Vir wie dit mag aangaan

Geagte Meneer of Mevrouw:

KENNISGEWING MET BETREKKING TOT DIE GELEENTHEID OM DEEL TE NEEM AAN DIE OMGEWINGSMAGTIGING PROSES VIR DIE VOORGESTELDE GENADE-BOERDERY MIDDELPLAATS SPILPUNT, IN DIE SOL PLAATJE PLAASLIKE MUNISIPALITEIT, NOORD-KAAP PROVINSIE, SUID-AFRIKA.

Genade Boerdery (Edms) Bpk (hierna verwys na as die aansoeker) het Environmental Impact Management Services (Edms) Bpk (EIMS) as die Omgewingsassessering Praktisyn (EAP) aangestel om te help met die onderneming van die vereisde magtigingsprosesse (insluitend die statutêre openbare deelname proses), en die samestelling en indiening van die vereisde dokumentasie, ter ondersteuning van die aansoek vir:

- 'n Omgewingsmagtiging (OM) in ooreenstemming met die Nasionale Omgewingsbestuurswet (Wet 107 van 1998) (NEMA), Omgewingsimpakbepaling (OIB) Regulasies, 2014 soos gewysig vir die volgende gelyste aktiwiteit:
 - GNR 984 (2014, soos gewysig): Aktiwiteit 15 (opruiming van meer as 20 hektaar inheemse plantegroei).

Bykomende gelyste aktiwiteite en/of watergebruike kan tydens die proses geïdentifiseer word.

Die aansoeker wil 8 nuwe verbouings (spilpunt) areas skep vir die verbouing van aartappels. Die ontwikkeling van hierdie spilpunte sal in fases oor die verloop van 5 jaar plaasvind en die gewasse sal geroteer word om roes te voorkom en die bewaring van die grond moontlik te maak. Sodra die plantsiklus vir 'n spilpunt voltooi is, sal die gebied hersaai word met weidingsgrasse vir beeste. Sewe van die nuwe verbouingsgebiede sal elk 60 hektaar beslaan en een sal 50 hektaar beslaan, wat sal lei tot die verwydering van 'n totale oppervlakte van ~470 hektaar van inheemse plantegroei teen die einde van die vyf-jaar tydperk.

Besproeiingsvereistes sal nagekom word deur die aansoeker se bestaande Wettige Watergebruik te gebruik, wat die neem van water uit die Vaalrivierstelsel vir besproeiing van tot 60 hektaar magtig. Geen bykomende waterbronne sal benodig word nie aangesien slegs een gewasarea op 'n slag geplant sal word.

Die voorgestelde projek is geleë op die plaas Middel Plaats South No. 104,, Sol Plaatje Pleatlike Munisipaliteit, Noord-Kaap Provinsie. Die terrein is ~8km suid van Schmidtsdrijf. Die middelpunt van die terrein is -28.785582°S, 24.074790°E. Verwys asseblief na aangehegte projekliggingskaart.

EIMS sal die prosedures volg soos omskryf in die Omgewingsimpakbepaling (OIB) Regulasies (GRN982 van 2014, soos gewysig) vir die onderneming van die Omvang- en Omgewingsimpakbepaling (OIB) proses. In ooreenstemming met Hoofstuk 6 van die OIB Regulasies, sal 'n openbare deelname proses onderneem word. U word hiermee uitgenooi om te registreer en kommentaar te lewer op die voorgestelde projek en aansoek/e. Om te verseker dat u geïdentifiseer en geregistreer is as 'n B&GP en dat u kommentaar vasgelê word, dien asseblief u naam, kontakbesonderhede, die rede vir u belangstelling of enige bekommernisse, skriftelik of telefonies by EIMS indien. Neem asseblief kennis dat slegs geregistreeerde B&GP's ingelig sal word oor toekomstige projekinligting en geleenthede vir deelname.

Deur te registreer as 'n belanghebbende en geaffekteerde party stem u in tot die insameling en verwerking van u persoonlike inligting soos per die EIMS Privaatheidskennisgewing beskikbaar by www.eims.co.za/public-participation. Om te verhoed dat geleenthede vir publieke deelname misgeloop word, dien asseblief B&GP-registrasies, of enige navrae, kommentaar of bekommernisse met betrekking tot hierdie aansoek, so gou moontlik in by EIMS by:

8 Dalmeny Road, Pine Park, 2194 | PO Box 2083, Pinetown 2123, South Africa

T (011) 789-7170 | F (086) 571- 9047

W www.eims.co.za | E mail@eims.co.za | Co Reg 1992/005927/07 | VAT 489 013 9027

Directors: L Whitlow, A Smith.

Kontak Persoon: Alex Msipa

EIMS Verwysing Nommer: 1683

Posadres: P.O. Box 2083; Pinegowrie; 2123

Telefoon: (011) 789 7170/ Fax: (086) 571 9047

E-Pos: middelplaats@eims.co.za

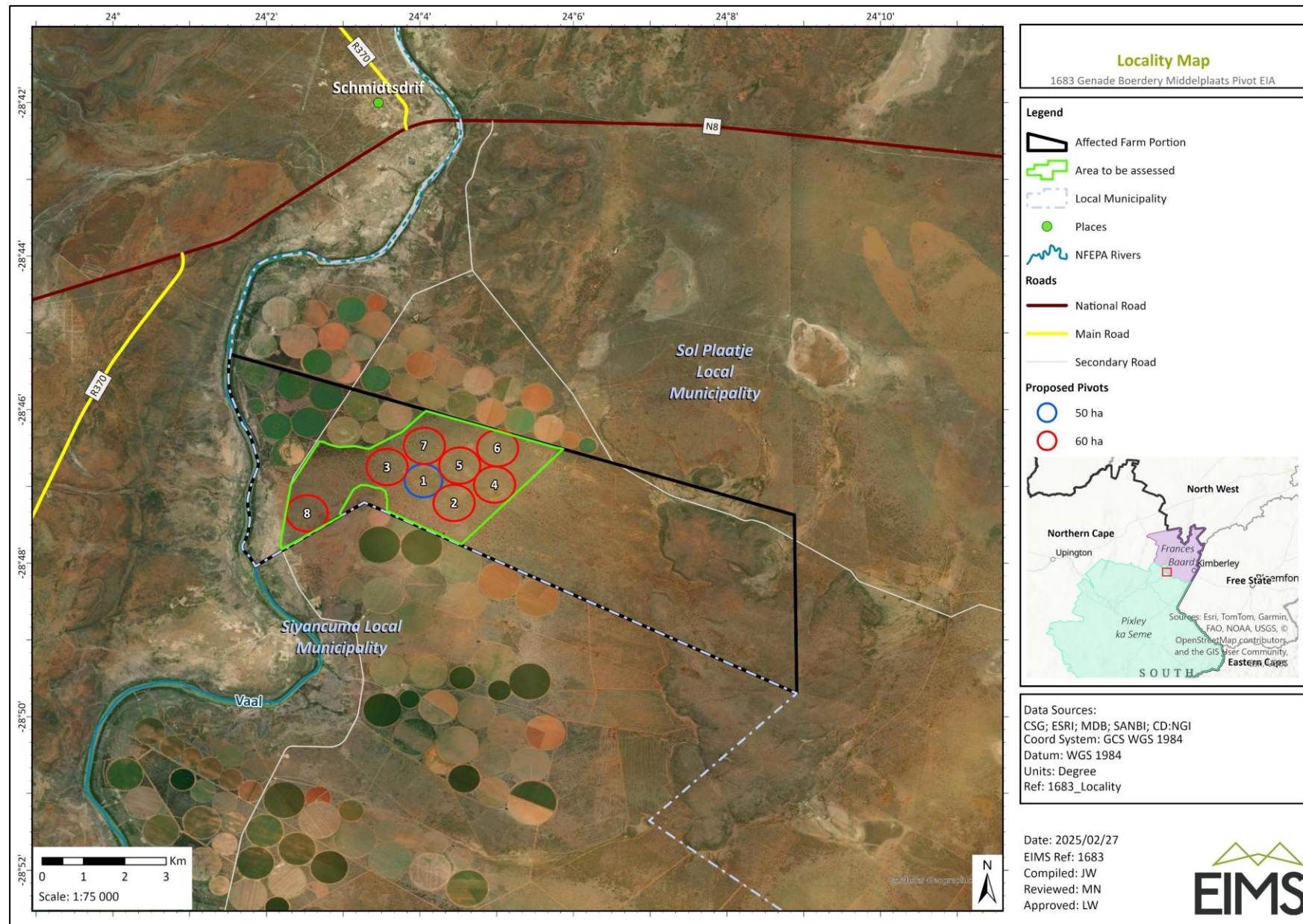
Sluit asseblief die projekverwysingsnommer **1683** in alle korrespondensie in.

Verdere inligting sal beskikbaar wees by www.eims.co.za/public-participation/. Neem asseblief kennis dat in die geval dat u weens databeperkings nie toegang tot die webwerf kan kry nie, kontak asseblief EIMS vir alternatiewe reëlins.

Voel asseblief vry om die ondergetekende te kontak indien u enige navrae of bekommernisse het.

Vriendelike groete,

Alex Msipa



Alexander Msipa

From: 1683 Middelplaats Pivot EIA <middelplaats@eims.co.za>
Sent: Monday, 17 March 2025 13:31
Subject: Genade Boerdery Middelplaats Pivot Development: Initial Notification
Attachments: 1683_Initial_Notification_Letter-Final.pdf; 1683_BID_Final.pdf

Dear Interested and Affected Party,

Kindly find attached notification regarding the opportunity to participate in the Environmental Authorisation application process for the Genade Boerdery Middelplaats Pivot Development Project in the Sol Plaatje Local Municipality, Northern Cape, South Africa. A Background Information Document (BID) is also attached.

Geagte Belandstellende en Geaffekteerde Party,

Vind asseblief aangeheg, 'n kennisgewing aangaande die geleentheid om deel te neem aan die Omgewingsmagtigings-aansoekproses vir die Genade Boerdery Middelplaats Spilpunt Ontwikkeling Projek in die Sol Plaatje Plaaslike Munisipaliteit, Noord-Kaap, Suid-Afrika. 'n Agtergrondinligtingsdokument (AID) is ook aangeheg.

KIND REGARDS
PUBLIC PARTICIPATION TEAM



T +27 11 789 7170
W www.eims.co.za

8 Dalmeny Road, Pine Park,
Randburg, 2194,
PO Box 2083, Pinetown, 2123, ZA

This e-mail and any attachment(s) thereto is intended solely for the confidential use of the intended recipient(s) and for the specific purpose(s) that it was intended. Unauthorised review, dissemination, distribution or copying of that e-mail is strictly prohibited. If you suspect that you may have received the mail in error, please desist from reading it, notify the sender immediately of the error, and return and/or destroy the original message.

TO:	Vincent Muila	FROM:	Alexander Msipa
DEPARTMENT :		REF:	1681
COMPANY:	Department of Mineral Resources & Energy (DMRE) (Deputy Director Mine Environmental Management)	DATE:	17 March 2025
FAX:	PAGES: 11		
RE:	Genade Boerdery Middelplaats Pivot Development: Initial Notification		

Dear Interested and Affected Party,

Kindly find attached notification regarding the opportunity to participate in the Environmental Authorisation application process for the Genade Boerdery Middelplaats Pivot Development Project in the Sol Plaatje Local Municipality, Northern Cape, South Africa. A Background Information Document (BID) is also attached.

Geagte Belandstellende en Geaffekteerde Party,

Vind asseblief aangeheg, 'n kennisgewing aangaande die geleentheid om deel te neem aan die Omgewingsmagtigings-aansoekproses vir die Genade Boerdery Middelplaats Spilpunt Ontwikkeling Projek in die Sol Plaatje Plaaslike Munisipaliteit, Noord-Kaap, Suid-Afrika. 'n Agtergrondinligtingsdokument (AID) is ook aangeheg.

Kind Regards,

EIMS PUBLIC PARTICIPATION TEAM

T: +27 11 789 7170

F: +27 86 571 9047

E: middelplaats@eims.co.za

W: www.eims.co.za